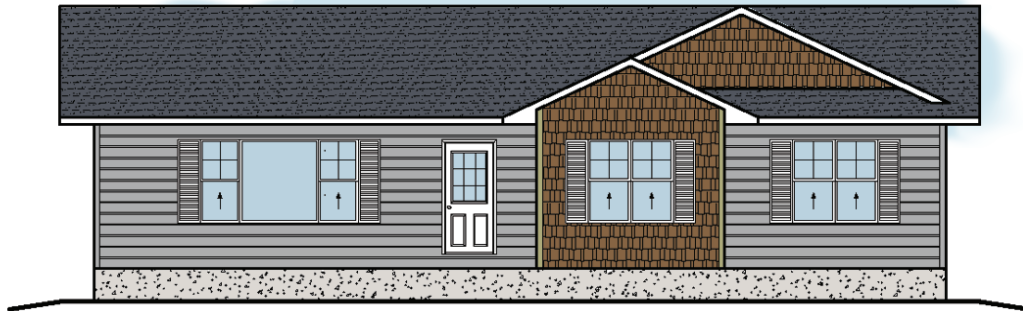


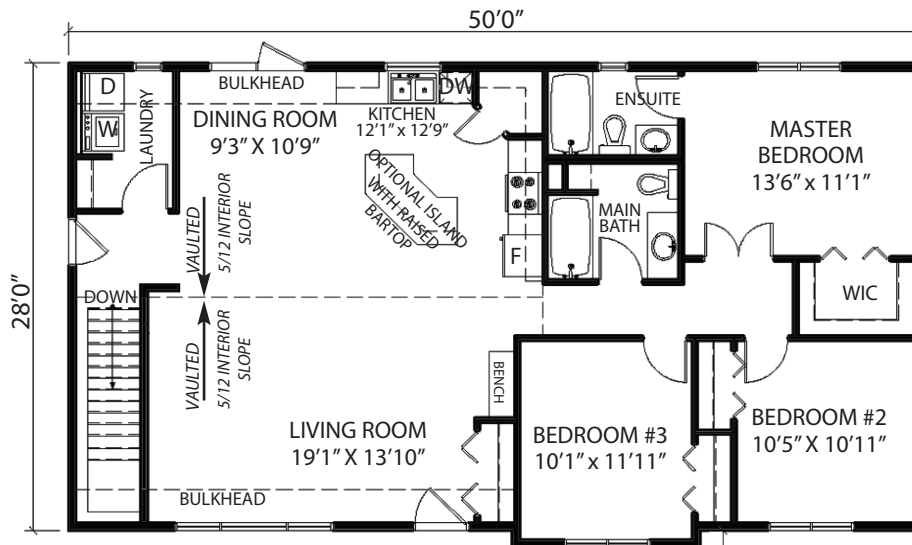


AF050R

1411 SQ. FT.



Some features shown may be optional



FEATURES:

- 8'0" main floor
- 2 x 10 l-joists
- 8'0" x 8" conc. basement
- Cont. footings

(g/b = grade beam) (conc. = concrete) (cont. = continuous) (pwf = permanent wood foundation)

Plans and specifications are subject to change without notice. All rights reserved in the copying and reproduction of these plans. All drawings meet the National Building Code and the Manitoba Building Code.