

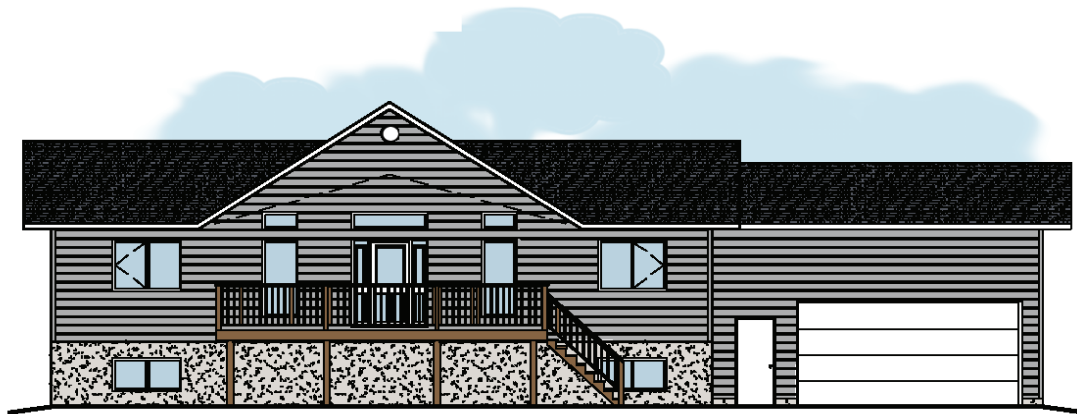


All-FAB
BUILDING
COMPONENTS

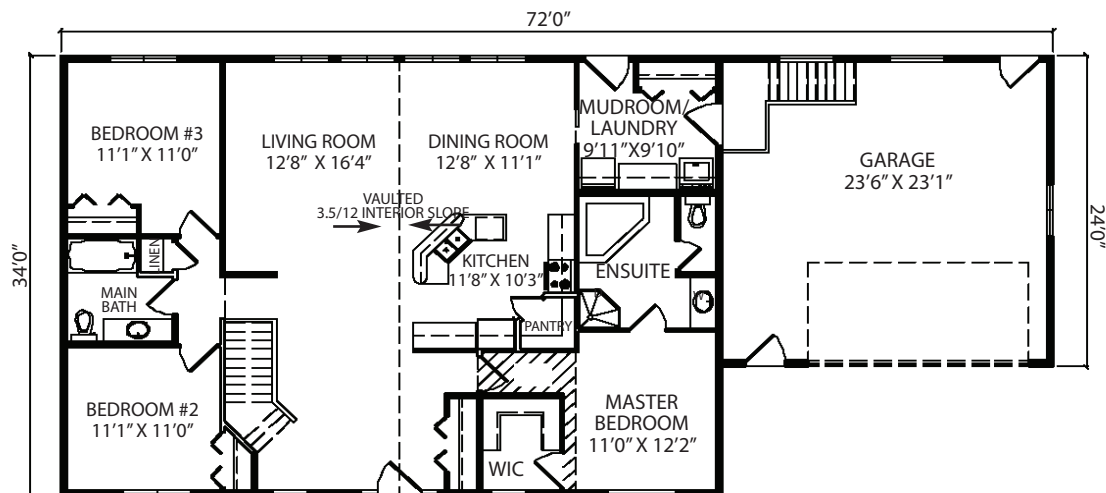
1755 Dugald Road
Winnipeg, Manitoba R2J 0H3
Tel. 204.661.8880 Fax 204.661.6973
Toll Free 1.800.665.0335
www.all-fab.com

AF039

2208 SQ. FT.



Some features shown may be optional



FEATURES:

- 8'0" main floor
- I-joists
- 8' pwf basement
- Cont. footing
- 12'10" walls in garage
- g/b and piles

(g/b = grade beam) (conc. = concrete) (cont. = continuous) (pwf = permanent wood foundation)

Plans and specifications are subject to change without notice. All rights reserved in the copying and reproduction of these plans. All drawings meet the National Building Code and the Manitoba Building Code.