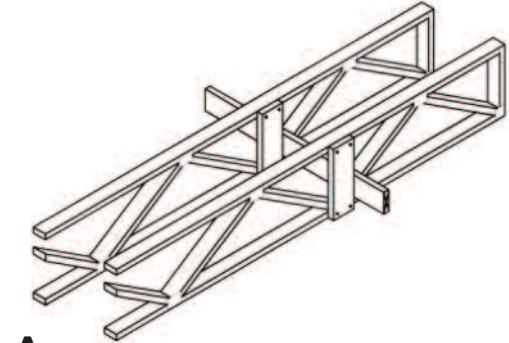


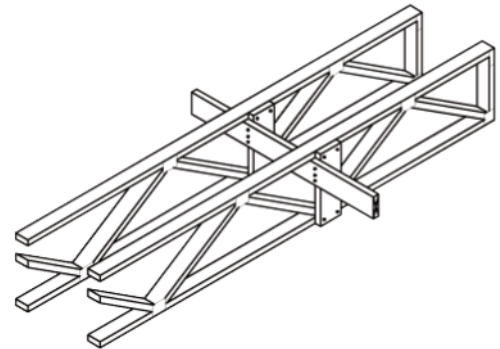


STRONGBACK INSTALLATION DETAILS

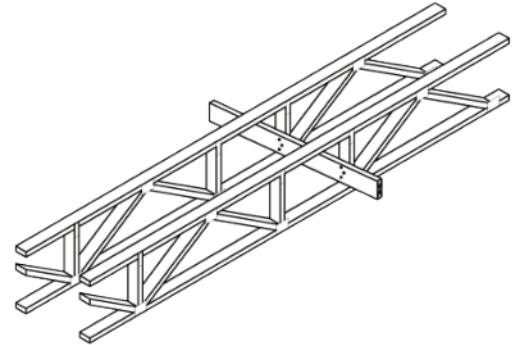
- Strongback shall be installed according to details A, B, C, D or E.
- Detail A & B:** Attach 2x4 vertical block to top and bottom chord with 2 - 3" common spiral nails. Place strongback against top or bottom chord and connect to vertical block with 3 - 3" common spiral nails.
- Detail C:** Place strongback against top or bottom chord and connect to vertical web with 3 - 3" common spiral nails.
- Detail D:** Place strongback against top or bottom chord and connect to chord with 2 - 3" #8 screws through chord into strongback. This method may only be used with maximum strongback size of 2x6. Locate screws $\frac{3}{4}$ " from the edge of chord.
- Detail E:** Applies to all details but shown only in Detail E for clarity.
 - End Detail:** Connect each end of strongback to gable ladder vertical web using 3 - 3" common spiral nails.
 - Splice Detail:** Splice connected to strongback with 12 - 3" common spiral nails equally spaced along splice.



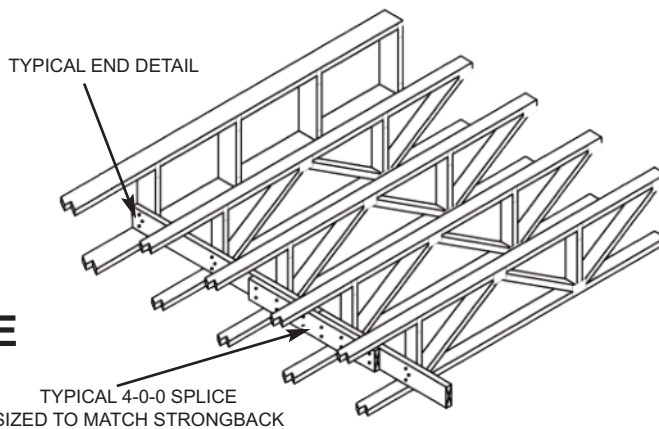
A STRONGBACK AGAINST BOTTOM CHORD



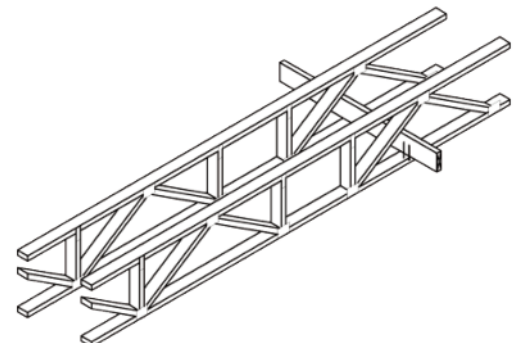
B STRONGBACK AGAINST TOP CHORD



C STRONGBACK ATTACHED TO VERTICAL WEBS



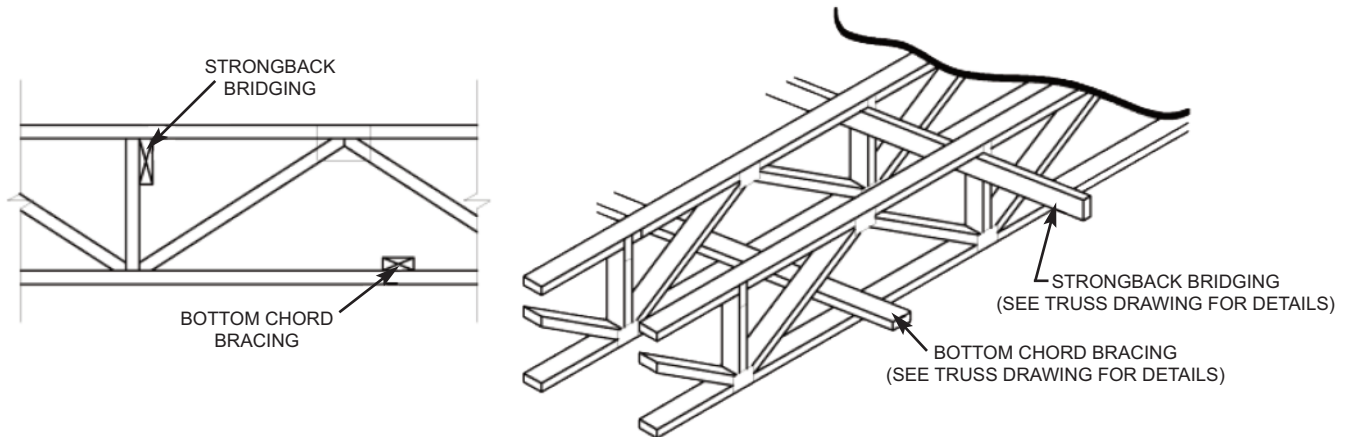
E



D FASTEN STRONGBACK TO BC OR TC WITH 2-3" #8



All trusses must be laterally braced to prevent buckling or overturning. Top chord stability is provided by the plywood sheathing while the bottom chord stability is provided by the ceiling finish. Where no rigid ceiling is attached directly to the truss bottom chord, apply continuous bracing at a maximum spacing of 10'0" o/c (see individual truss drawing for required spacing).



Strongbacks are required for uniform deflection control and to reduce vibration (see truss drawing for required strongback size and locations).

See reverse for strong back installation details.

DO NOT make field repairs to damaged trusses without approval of manufacturer.

DO NOT overload single or group of trusses with plywood, drywall or other construction materials or tools.

DO NOT permit cutting, drilling or damage of the chords or webs.

DO NOT remove webs, even temporarily.

NON-LOADBEARING INTERIOR PARTITION SUPPORT DETAIL

